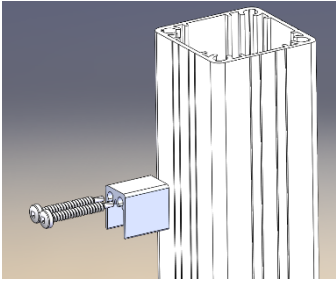
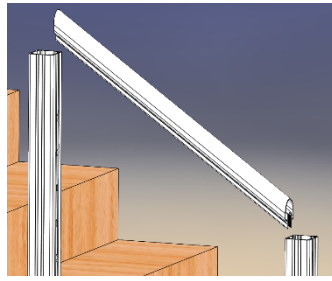


RFX100/250 Top Rail Installation



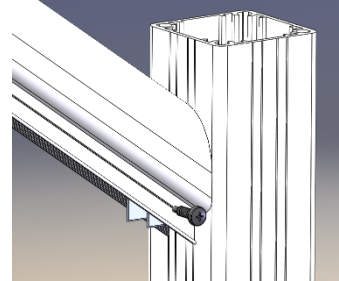
Rail Connecting Block

Measure 3-1/2" from middle of top hole to determine install location of RCB. Secure fitting in place with 2 each screws. Cut top of post to desired height.



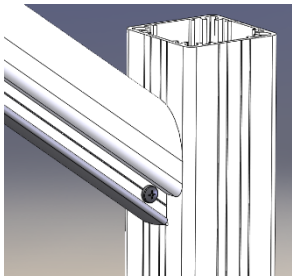
Cutting Top Rail

Measure the distance and angle needed for top rail to fit between posts. Cut top rail using a saw.



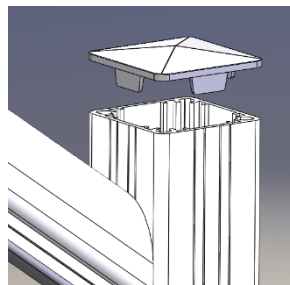
Attaching Top Rail

Slide top rail over top of RCB and secure with 2 each screws one on each side.



RFX100/250 Infill

Snip RCB to allow Infill to be snapped on for a finished look. **Install prior to tensioning the cables.**



Install Post Cap

Install post cap. Use adhesive to secure cap to post.