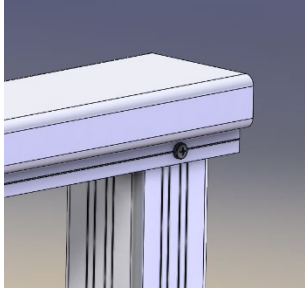
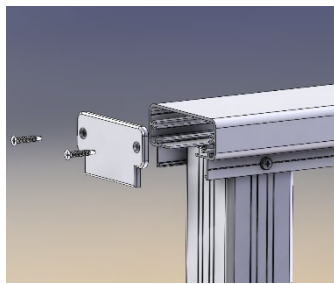


RFX200/300 Top Rail for Level Applications



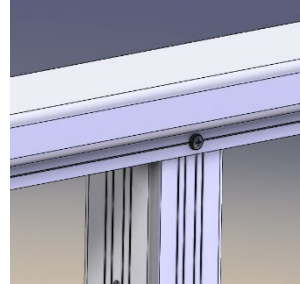
Attaching to End Post

Rail slides over top of post and attaches with 2 each screws..



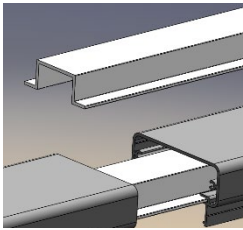
Attaching End Cap

End cap goes on open end of top rail. Use 2 each included self-tapping screws to attach to top rail. End cap must be installed first if ending against a wall.



Attaching to Intermediate Post

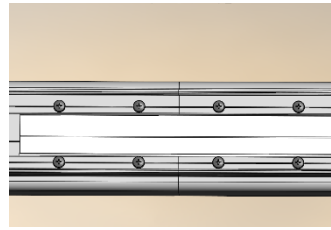
Rail slides over top of post and attaches with 2 each screws. 1 screw on each side.



RFX200/300 Level

Splice - 1

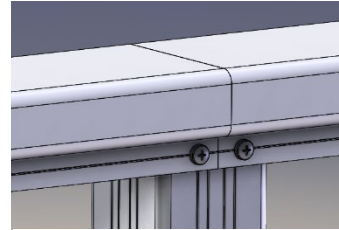
Level splice slides into each end of the rail. Splice is acceptable between posts or over posts.



RFX200/300 Level

Splice - 2

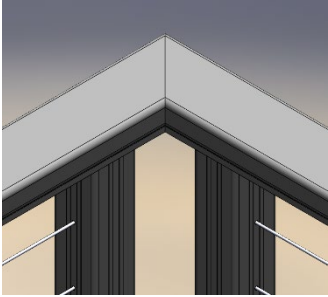
Use 8 each self-tapping screws to secure splice into rail from the underside.



Option to Splice Over a Post

Splice must be installed into rail and then rail mounts to post. Secure rail with 4 each screws.

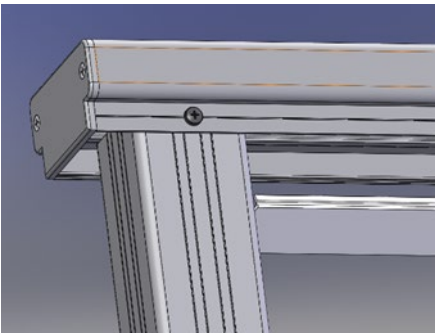
RFX200/300 Top Rail for Level Applications



Angled Splice

Splices are also used to attach corner rails. Angles include 45, 90 and custom degrees.

RFX200/300 Top Rail for Level Applications



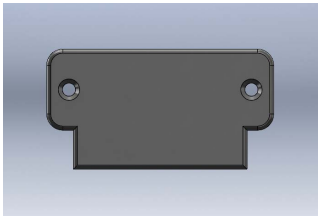
RFX200/300 – Flat Infill

Cut flat infill to length and snap into bottom side of to rail. **Install prior to tensioning the cables.**



RFX200/300 Top Rail Terminating Into Post or Column

Please Note Standard end cap can also be used if desired.



RFX200/300 Terminating into Post - 1

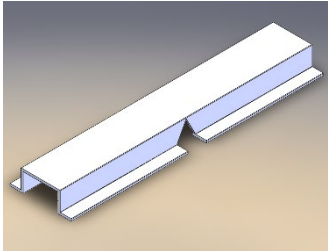
Drill 2 holes through the end cap for screws.



RFX200/300 Terminating into Post - 2

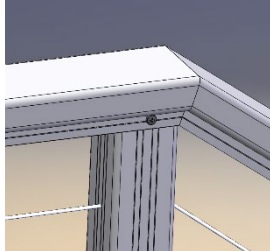
Use 2 each wood screws to attach end cap to top rail then attach rail to column using two each screws.

RFX200/300 Top Rail for Stair Applications



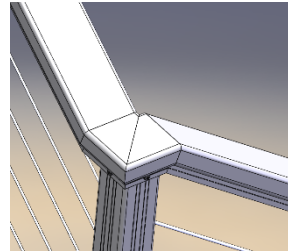
RFX200/300 – Stair Splice

Bend splice to the correct angle of the stairs and secure splice into place with 8 each screws.



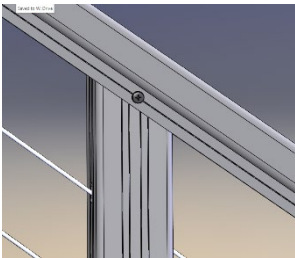
Stair Splice – Application 1

Example of rail mitered down the stairs in a continuous line.



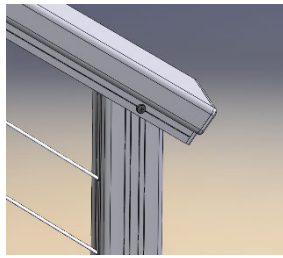
Stair Splice – Application 2

Example of rail mitered down the stairs in with a 90 degree turn.



RFX200/300 Stair Intermediate Post

Cut post at the angle of the stairs. Rail slides over top of post and attaches with 2 each screws. 1 screw per side.



RFX200/300 Stair End Post

Cut post at the angle of the stairs. Rail slides over top of post and attaches with 2 each screws. 1 screw per side.

Please Note

RFX200/300 does not qualify as a graspable rail down the stairway. A secondary handrail must be used (ADA Sub-Rail) or RFX100/250 top rail can be used.

Please Note

Painting the ends of the railing that has been cut will help prevent oxidation.

Please Note

Railing must be cut square to allow end cap to securely attach to rail.